

Methylene Blue Treatment Enhances Mitochondrial Function and Locomotor Activity in a C57BL/6 Mouse Model of Multiple Sclerosis

Mohammad Mehdi Ommati¹, Negar Azarpira², Vahideh Gozashtegan^{3,4}, Forouzan Khodaei⁴, Hossein Niknahad^{3,4,*}, Reza Heidari^{3,*}

¹College of Life Sciences, Shanxi Agricultural University, Taigu, Shanxi 030801, Peoples' Republic of China.

²Transplant Research Center, Shiraz University of Medical Sciences, Shiraz, Iran.

³Pharmaceutical Sciences Research Center, Shiraz University of Medical Sciences, Shiraz, Iran.

⁴Department of Pharmacology and Toxicology, School of Pharmacy, Shiraz University of Medical Sciences, Shiraz, Iran.

Abstract

Multiple sclerosis (MS) is a neurodegenerative disease. Although multiple factors are involved in the pathogenesis of MS, there are several lines of evidence that oxidative stress and mitochondrial dysfunction are involved in neuronal demyelination and deterioration of MS symptoms. Hence, compounds that could modulate mitochondrial function and decrease mitochondria-mediated ROS formation might be able to decrease MS symptoms. Methylene blue (MB) is a compound widely used in the treatment of central nervous system disease (e.g., Alzheimer's disease). It has been found that MB could robustly suppress mitochondria-mediated ROS formation at low concentrations. The current study was designed to evaluate the effect of MB on neuronal demyelination, mitochondrial function, and ROS formation in an animal model of MS. C57BL/6 male mice received cuprizone (0.1% w: w in chow diet for 42 consecutive days). MB (0.5 and 1 mg/kg, oral) was simultaneously administered. Significant demyelination was detected in CPZ-treated animals, which confirm the induction of MS in the mice model. Decreased animals' locomotor activity, including significant suppression of open field movement, stride length, and decreased time on the rotarod, was evident in CPZ-treated mice. Mitochondrial indices, including significantly elevated lipid peroxidation, mitochondrial depolarization, significant mitochondrial permeabilization, and decreased ATP levels, were also detected in the CPZ group. It was found that MB administration significantly improved animals' locomotor activity and mitochondrial indices in the current animal model of MS. The effects of MB on mitochondria and mitochondria-mediated ROS formation might play a fundamental role in the protective effects of this compound.

Keywords: ATP, Mitochondrial impairment, Neurodegeneration, Neurotoxicity, Oxidative stress.

1. Introduction

Methylene blue (MB; 3, 7-Bis (dimethyl-amino) phenothiazine-5-ium, Figure 1) is a phenothiazine compound tested for the treatment of a

variety of ailments in the past 100 years (1). The positive effects of MB on different experimental models of human diseases have been reported (2-9). It has been found that MB significantly alleviated inflammatory disorders, ischemia-reperfusion-induced organ injury, as well as xenobiotics-induced damage toward biological systems (9-14). On the other hand, the effects of MB on

Corresponding Author: Hossein Niknahad and Reza Heidari, Pharmaceutical Sciences Research Center and Department of Pharmacology and Toxicology, School of Pharmacy, Shiraz University of Medical Sciences, Shiraz, Iran.
Email: niknahadh@sums.ac.ir; rheidari@sums.ac.ir

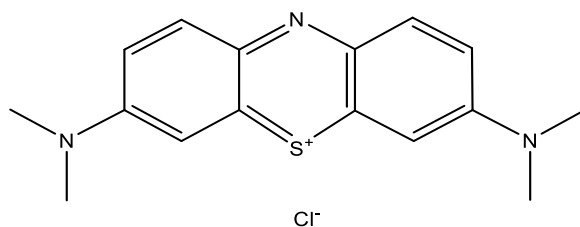


Figure 1. Methylene blue (3, 7-Bis (dimethyl amino) phenothiazine-5-ium) chloride.

central nervous system diseases are an interesting feature of this compound (15-19). The effects of MB on the central nervous system (CNS) diseases such as Alzheimer's are the most impressive therapeutic properties of this compound (20-22). Interestingly, some formulations of MB even underwent clinical trials (e.g., Rember™) in humans (1, 23, 24). MB is an FDA-approved drug for the treatment of methemoglobinemia with different etiologies (25).

Multiple sclerosis (MS) is a debilitating disease characterized by neuron demyelination and several locomotor dysfunctions in patients (26, 27). Multiple neurological deficits have been associated with MS (27). The role of the immune response in the pathogenesis of MS has been well-documented (26, 28). However, several other factors have also been identified in the pathobiology of MS disease (28, 29). Reactive oxygen species (ROS) and oxidative stress is a primary mechanism involved in the progression of MS (30-32).

Although there is no precise mechanism for the source of ROS in the brain of MS patients, the activity of inflammatory cells, the accumulation of redox-active metals such as iron in the brain tissue, as well as mitochondrial impairment has been identified as a source of ROS in the brain of MS patients (33-35). Cellular mitochondria are the primary source of ROS formation (36, 37). Therefore, in the current study, the role of MB administration on the brain mitochondrial function has been investigated.

Various investigations mentioned the effects of MB on mitochondrial function and regulation of mitochondria-mediated reactive oxygen (ROS) formation (38). It has been found that MB significantly decreased mitochondria-mediated ROS formation (38). The effects of MB on cellular mitochondria is concentration-dependent (38). Low concentrations of MB decrease mitochondria

ROS formation (38). Higher concentrations of this compound (>5 μM) deteriorate mitochondrial function and could cause cell death (38).

The current investigation aimed to evaluate the effects of MB supplementation on the locomotor activity and mitochondrial function in an animal model of MS.

2. Material and methods

2.1. Reagents

Methylene blue (3, 7-Bis (dimethylamino) phenothiazine-5-ium), trichloroacetic acid (TCA), thiobarbituric acid (TBA), sodium citrate, ethylene diamine tetra-acetic acid (EDTA), meta-phosphoric acid, methanol HPLC grade, 2 amino 2-hydroxymethyl-propane-1,3-diol-Hydrochloride (Tris-HCl), and all salts used for making buffer solutions were obtained from Merck (Darmstadt, Germany). Cuprizone (bis-cyclohexanone oxal-dihydrazone) was purchased from Sigma (Sigma-Aldrich, St. Louis, MO).

2.2. Animals

C57BL6 male mice weighing 20-25 g were purchased from the Center of Comparative and Experimental Medicine (Shiraz, Iran). The use of animals complied with the guidelines established by the Animal Care Committee of this institute (94-01-36-11043). Animals were housed in a standard environment (temperature of 23±1 °C and 45 ± 5% humidity). Animals had access to a rodents chow diet (RoyanFeed®, Isfahan, Iran), and tap water ad libitum.

2.3. Animal model of multiple sclerosis

Cuprizone (Oxalic bis (cyclohexylidene-hydrazide; CPZ)-fed C57BL6 mice were used as an animal model of MS (n=8) (39). Mice were treated with a rodent chow diet containing 0.2% (w: w) CPZ ad libitum (39, 40). The control group

consisted C57BL/6 mice (n=8) that were not fed CPZ (n=8). Two other groups were simultaneously treated with CPZ and MB (0.5 mg/kg and 1 mg/kg, oral) for 42 consecutive days (n=8/group). At day 43, animals underwent a series of behavioral investigations. Afterward, animals were sacrificed (thiopental 80 mg/kg, i.p), and their brain was excised and used for further experiments.

2.4. Behavioral studies

2.4.1. Rotarod test

Following a reported procedure, each rat underwent five sessions of rotarod performance on a 'Techno' (Lucknow, India) made a rotarod apparatus. The speed of the rotarod was fixed with the increments of 5, 10, and 15 rpm. Each session had three trials for each rat with 10 min interval, and the time that rats stayed on the rotating rod was recorded automatically (41-43).

2.4.2. Gait stride

Using a runway procedure, the rats, with their hind paws wetted with the ink, were allowed to walk down on a paper strip (60 cm long, 10 cm wide) from the brightly lit corridor toward a dark side. The distance between the prints of left and right paws was measured and recorded (41-44).

2.4.3. Open field test

Open-field behavior is used as an index of animals' locomotor activity in the animal models of hyperammonemia and hepatic encephalopathy (45, 46). The open-field test was conducted for each group five hours before animal anesthesia and blood and liver sample collection. The apparatus was made of the white wood box (100 cm L × 100 cm W × 30 cm H, box floor was divided into 25 squares of 20×20 cm). The open-field arena was equipped with a webcam (2.0-Megapixel, Gigaware, UK), and all activities were monitored and recorded from a separate room. Animals' behavior was recorded for fifteen minutes, and the total number of crossed squares were counted (Total locomotion) (47, 48).

2.5. Histopathological evaluation of the brain tissue

Brain tissue sections were preserved in a

formalin buffer solution (0.4% sodium phosphate monobasic, 0.64% sodium phosphate dibasic, and 10% formaldehyde in double-distilled water). Luxol fast blue (LFB) staining was applied to detect neuronal demyelination in the corpus callosum region of the brain of different experimental groups (49, 50).

2.6. Isolation of the liver mitochondria

Mice liver mitochondria were isolated as previously described (51). Briefly, animals were anesthetized (ketamine/xylazine, 50/10 mg/kg, i.p), and their liver was excised and washed with ice-cold saline (sodium chloride 0.9%) (51-53). The organ was homogenized with an Ultra-Turrax[®] Tube (IKA) homogenizer (8000 rpm, 10 sec), in a buffer containing 220 mM mannitol, 70 mM sucrose, 0.5 mM EGTA, 2 mM HEPES, 0.1% mostly fatty acid-free bovine serum albumin (pH=7.4) at a 10:1 buffer to liver (v/w) ratio (51, 54). Afterward, the liver homogenate was centrifuged at 1,000 g for 20 minutes at 4°C to remove intact cells and nuclei. The supernatants were further centrifuged (15,000 g, 4 °C, 20 minutes) to precipitate the heavy membrane fractions (mitochondria) (55, 56). This step was repeated three times using a fresh buffer medium. As mentioned, all manipulations for liver mitochondria isolation were performed at 4 °C or on ice to minimize mitochondrial injury (51).

2.7. Mitochondrial ATP levels

Based on a previously reported protocol, mitochondrial ATP level was assessed by HPLC (57). Briefly, isolated mitochondria (1 mg protein/mL) were treated with 100 µL ice-cooled phosphoric acid (50 % w: v, 4 °C) and centrifuged (10 min, 15,000 g, 4 °C). Afterward, the supernatant (100 µL) was treated with its equivalent volume of ice-cooled 1 M KOH solution. Samples (25 µL) were injected into an HPLC system consisted of an LC-18 column (µ-Bondapak, 25 cm) (58). The mobile phase was composed of 100 mM KH₂PO₄ (pH = 7 adjusted with KOH), tetrabutylammonium hydroxide (1 mM), and acetonitrile (2.5 % v: v). The flow rate was 1 mL/min, and the UV detector was set at λ=254 nm (57, 58).

2.8. Lipid peroxidation in isolated mitochondria

Thiobarbituric acid-reactive substances (TBARS) were measured in isolated kidney mitochondria (59, 60). Previous studies mentioned that sucrose interferes with the lipid peroxidation test in isolated mitochondria preparations (51). Therefore, mitochondria preparations were washed once (to remove sucrose) in ice-cooled MOPS-KCl buffer (50 mM MOPS, 100 mM KCl, 4 °C, pH = 7.4). For this purpose, isolated kidney mitochondria were suspended in 5 mL of MOPS-KCl buffer and centrifuged (17,000 g, 15 min). The pellet was re-suspended in MOPS-KCl buffer and used for TBARS assay. The mitochondrial suspension (1 mg protein/mL) was mixed with 1 mL of a solution containing trichloroacetic acid (15 % w: v), HCl (0.24 N), thiobarbituric acid (0.375 % w: v), and Trolox (500 µM) (61-63). Samples were heated for 15 min at 100 °C (51). Then 1 mL of n-butanol was added and vortexed (5 min). Samples were centrifuged (17,000 g, 10 min), and the absorbance of the upper phase (n-butanol phase) was measured (EPOCH plate reader, BioTek® Instruments, Highland Park, USA, $\lambda=532$ nm) (51).

2.9. Mitochondrial depolarization

Mitochondrial uptake of rhodamine 123 was applied for the evaluation of mitochondrial depolarization (64-66). Rhodamine 123 accumulates in the mitochondrial matrix by facilitated diffusion. When the mitochondrion is depolarized, there is no facilitated diffusion. Therefore, the amount of rhodamine 123 in the supernatant will be increased (67-69). In the current study, the mitochondrial fractions (0.5 mg protein/mL; in the depolarization assay buffer) were incubated with rhodamine 123 (10 µM, 30 min, 37 °C, in the dark) (70-73). Afterward, samples were centrifuged (17,000 g, 2 min, 4 °C), and the fluorescence intensity of the supernatant was monitored (FLUOstar Omega®; BMG Labtech, Germany; $\lambda_{\text{excitation}}=485$ nm and $\lambda_{\text{emission}}=525$ nm) (64, 74).

2.10. Mitochondrial permeabilization and swelling

Mitochondrial swelling was estimated by analyzing the changes in optical density at $\lambda=540$ nm (51, 75). Briefly, isolated mitochondria (0.5

mg protein/ml) were suspended in swelling buffer (125 mM Sucrose, 65 mM KCl, 10 mM HEPES, pH=7.2) (76). The absorbance was monitored ($\lambda=540$ nm, 30°C, during 30 min) (77, 78), using an EPOCH plate reader (Bio-Tek® Instruments, Highland Park, USA). A decrease in absorbance is connected with an increase in mitochondrial swelling. The results are reported as maximal mitochondrial swelling amplitude ($\Delta\text{OD } 540$ nm) (51, 75).

2.11. Mitochondrial dehydrogenases activity

The 3-(4, 5-dimethylthiazol-2-yl)-2, 5-diphenyltetrazolium bromide (MTT) assay was applied as a colorimetric method for the estimation of mitochondrial dehydrogenases activity in isolated mice liver mitochondria (79-81). Mitochondrial suspension in a buffer containing 0.32 M sucrose, 1 mM EDTA, and 10 mM Tris-HCl, pH 7.4, was incubated with 0.4% of MTT at 37 °C for 30 minutes. The product of purple formazan crystals was dissolved in 1 ml dimethyl sulfoxide (DMSO) (61, 82-84). Then, 100 µL of dissolved formazan was added to a 96-well plate, and the optical density at $\lambda=570$ nm was measured with an EPOCH plate reader (BioTek® Instruments, Highland Park, USA). Samples protein concentrations were determined by the Bradford method (61, 85).

2.12. Statistical methods

Data are given as Mean \pm SD. The comparison of data sets was performed by the one-way analysis of variance (ANOVA) with Tukey's multiple comparisons as a post hoc test. Values of $P<0.05$ were considered statistically significant.

3. Results

A significant sign of demyelination was evident in CPZ-treated animals, as revealed by LFB staining of the brain tissue (Figure 2). On the other hand, it was found that MB administration (0.5 and 1 mg/kg) dose-dependently decreased the number of demyelinated neurons in the corpus callosum (CC) region of CPZ-treated mice (Figure 2).

Animals locomotor activities were impaired in the mice model of MS (Figure 3). A significant decrease in the open field activity, hind paw stride length, and time on the rotarod were detected in CPZ-treated mice (Figure 3). MB treat-

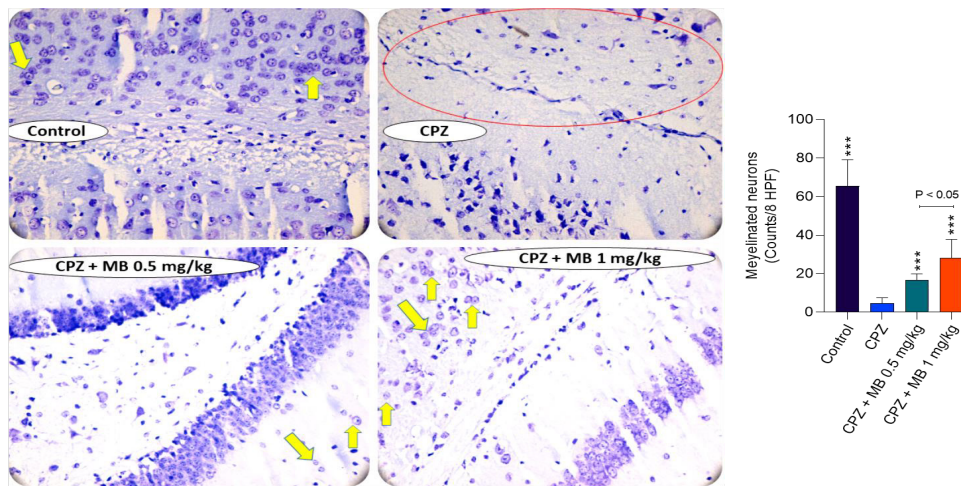


Figure 2. Luxol fast blue (LFB) stain revealed myelinated neurons with dark blue (Yellow arrow) in the corpus callosum (CC) of the control group. Demyelination in the CC of C57BL/6 mice treated with cuprizone (Red circle). Significant changes in neurons demyelination was detected in MB-treated animals. CPZ: Cuprizone; MB: Methylene blue.

ment (0.5 and 1 mg/kg) significantly improved the animals' locomotor function in the CPZ group (Figure 3). The effects of MB on animals' locomotor activity was not dose-dependent (Figure 3).

Impaired mitochondrial function, includ-

ing decreased mitochondrial dehydrogenases activity, mitochondrial permeabilization, depleted mitochondrial ATP, and mitochondrial depolarization, were evident in CPZ-treated mice (Figure 4). It was found that MB treatment significantly

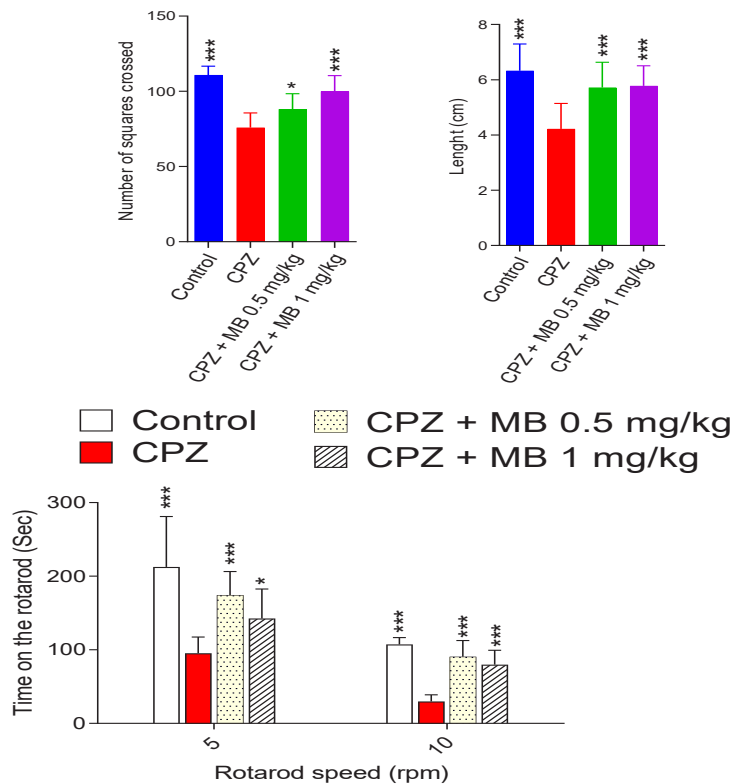


Figure 3. Effect of methylene blue (MB) supplementation on the locomotor activity in the cuprizone (CPZ) model of multiple sclerosis. Data are represented as mean±SD (n=8). Asterisks indicate significantly different as compared with the CPZ-treated group (* P<0.05 and ** P<0.01).

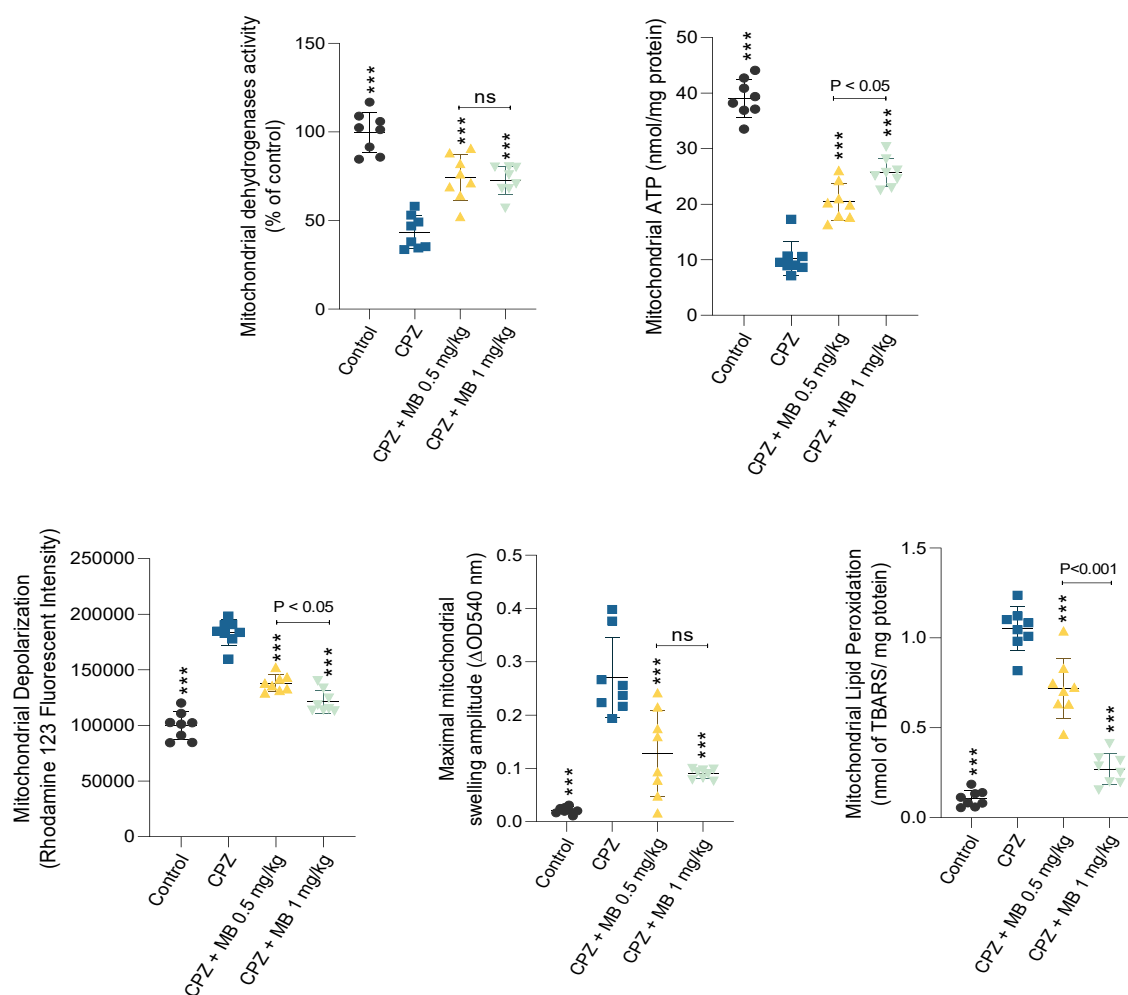


Figure 4. Mitochondrial indices in the whole brain mitochondria of multiple sclerosis (MS) mouse model. CPZ: Cuprizone; MB: Methylene blue. Data are represented as mean±SD (n=8). ***Indicate significantly different as compared with the CPZ-treated group (P<0.001).

prevented brain mitochondrial impairment in the current animal model of MS (Figure 4). The effects of MB on mitochondrial indices were not dose-dependent in the current study (Figure 4).

4. Discussion

MS is a neurodegenerative disease that severely affects the patients’ quality of life. Hence, finding therapeutic options against this disease is of great clinical value. Several pharmacological targets, including the immune system and cellular mitochondria, have been identified for the treatment of MS. In the current investigation, the effects of MB, a mitochondrion regulating compound, have been evaluated in an animal model of MS. It was found that MB treatment (0.5 and 1

mg/kg, oral, for 42 consecutive days) significantly impaired mitochondrial indices and enhanced animal locomotor activity in the MS mouse model.

The role of mitochondrial impairment in the pathogenesis of other neurodegenerative diseases such as Alzheimer’s disease and Parkinsonism has been widely investigated (86, 87). There is no precise mechanism for mitochondria-mediated ROS formation in MS (36, 88, 89). However, inflammatory response and mitochondrial impairment might play a pivotal role in brain oxidative stress in MS patients. There is also a large body of evidence that mitochondrial impairment could play a pivotal role in the pathophysiology of the MS disease (90-92). It has been found that mitochondrial dysfunction plays a significant role in

the release of cell death mediators and neuronal demyelination (88, 93-95). Mitochondria-facilitated ROS formation could damage several targets, including proteins, lipids, and mitochondrial DNA (mtDNA) (89, 93). A high level of mitochondrial ROS could lead to mutated mtDNA (89, 93). The enzymes for the repair of mitochondrial DNA are not as efficient as those for nuclear DNA. Hence, mtDNA is more prone to ROS damage. When the mutant mtDNA increase to a pivotal threshold, the symptoms of the mitochondria-related disease could occur (36, 88, 89). Damaged mtDNA could lead to deterioration in mitochondrial electron transport chain proteins synthesis, more ROS formation, and decreased ATP production.

Several studies also reported the impairment in mitochondrial electron transport chain (ETC) components in the MS disease (92, 93, 96-100). Decreased activity of complex I, III, and IV from the neurons in the different brain regions of MS models (92, 93, 96-100). Decreased activity of ETC could be directly related to mtDNA damage induced by oxidative stress. The final result of this process is decreased ATP production in mitochondria. ATP plays a fundamental role in many physiological processes, such as neurotransmitter release and ion channel activity (22, 88). Hence, the mitochondrial energy crisis in neurons of MS patients could lead to severe complications. MB could affect the function of mitochondrial ETC components a which finally leads to a higher ATP level (38).

There are several lines of evidence that mention the interaction of MB with cellular mitochondria in different experimental models (2, 38, 101-104). It has been found that MB (at low concentrations) significantly mitigated mitochondria-mediated ROS formation (38). Cellular mitochondria are the major sources of ROS (105, 106). A large amount of ROS is produced during the oxidative phosphorylation process, which is counteracted by mitochondrial antioxidant systems (107, 108). However, when the mitochondrial function is impaired or mitochondrial antioxidant capacity is overwhelmed (e.g., in MS disease), mitochondria-facilitated ROS formation could damage this organelle and finally lead to cellular injury.

Interestingly, it has been mentioned that

the antioxidant activity of MB is mediated through the interaction of this compound with the ETC (38). The cycling between the oxidized (MB) and reduced (leucomethylene blue; MBH₂) forms of MB plays a vital role in its effects on mitigating mitochondria-mediated ROS formation (38). The complex I of the ETC use NADH to reduce oxidized MB to reduced MBH₂ (38). On the other hand, cytochrome c and complex IV of ETC accept an electron from MBH₂ and re-oxidized it to MB (38). Therefore, some ETC complexes (II and III), which are involved in ROS production (e.g., superoxide anion formation) are bypassed. Therefore, this could be one of the most important mechanisms for the positive effects of low concentrations of MB on mitochondria-mediated ROS formation. The effects of MB on mitochondrial biogenesis is another important mechanism that could enhance cellular energy level and decrease cell injury in tissues fronted energy crisis (e.g., neuronal ATP deficit in MS disease) (109-111). As mentioned, some ETC components might have defected in MS disease (92, 93, 96-100). Hence, MB might help neurons and glia to produce more energy (ATP) and prevent an energy crisis in these cells. Some other studies revealed that MB could indirectly enhance cellular antioxidant defense mechanisms (109). This effect of MB could be mediated through the activation of the antioxidant enzymes gene expression (109). All these data mention the positive effects of MB on cellular mitochondria and its important therapeutic potential in mitochondria-linked disorders.

MB is widely investigated in central nervous system (CNS) disorders as well as xenobiotics-induced CNS injury (112-116). The effects of MB on Alzheimer's disease is one of the most investigated aspects of this compound on CNS diseases (22, 117-119). A formulation of MB even went under clinical trial (Rember™) for Alzheimer's disease (1, 23). MB is also an FDA-approved drug for the treatment of methemoglobinemia (25). Hence, MB could be readily administered to patients.

Although MS is a multifaceted neurodegenerative disease that several mechanisms are involved in its pathogenesis, mitochondrial impairment seems to play a significant role in the

pathobiology of this disease. Hence, mitochondria targeting could be a promising therapy for MS patients. In the current study, we found that MB administration prevented neuronal demyelination, mitochondria-mediated ROS formation, and improved locomotor activity. More investigations are warranted for the determination of the precise effects of MB on MS disease progression and the use of this phenothiazine compound in the management of neurological deficits in patients.

5. References

1. Schirmer RH, Adler H, Pickhardt M, Mandelkew E. Lest we forget you--methylene blue.... *Neurobiol Aging*. 2011 Dec;32(12):2325.e7-16. doi: 10.1016/j.neurobiolaging.2010.12.012.
2. Lee KK, Imaizumi N, Chamberland SR, Alder NN, Boelsterli UA. Targeting mitochondria with methylene blue protects mice against acetaminophen-induced liver injury. *Hepatology*. 2015;61;326-336. doi: 10.1002/hep.27385.
3. Aksu B, Umit H, Kanter M, Guzel A, Aktas C, Civelek S, et al. Effects of methylene blue in reducing cholestatic oxidative stress and hepatic damage after bile-duct ligation in rats. *Acta histochemica*. 2010;112;259-69. doi: 10.1016/j.acthis.2008.12.002.
4. Sarac F, Kilincaslan H, Kilic E, Koldas M, Terzi EH, Aydogdu I. Methylene blue attenuates renal ischemia-reperfusion injury in rats. *J Pediatr Surg*. 2015;50;1067-1071. doi: 10.1016/j.jpedsurg.2014.06.018.
5. Chen JL, Dai L, Zhang P, Chen W, Cai G-s, Qi X-w, et al. Methylene blue attenuates acute liver injury induced by paraquat in rats. *Int Immunopharmacol*. 2015 Sep;28(1):808-12. doi: 10.1016/j.intimp.2015.04.044.
6. Daemen-Gubbels CR, Groeneveld PH, Groeneveld AJ, van Kamp GJ, Bronsveld W, Thijs LG. Methylene blue increases myocardial function in septic shock. *Crit Care Med*. 1995;23;1363-1370. doi: 10.1097/00003246-199508000-00009.
7. Galili Y, Ben-Abraham R, Weinbroum A, Marmur S, Iaina A, Volman Y, et al. Methylene blue prevents pulmonary injury after intestinal ischemia-reperfusion. *J Trauma*. 1998;45;222-226. doi: 10.1097/00005373-199808000-00004.
8. Tian Z-g, Ji Y, Yan W-j, Xu C-y, Kong

Acknowledgments

The current investigation was financially supported by the office of Vice-Chancellor of Research Affairs of Shiraz University of Medical Sciences (Grant number: 94-01-36-11043/95-01-36-12042). The authors thank the Pharmaceutical Sciences Research Center of Shiraz University of Medical Sciences for providing technical facilities to carry out this study.

Conflict of Interest

None declared.

Q-y, Han F, et al. Methylene blue protects against paraquat-induced acute lung injury in rats. *Int Immunopharmacol*. 2013;17;309-313. doi: 10.1016/j.intimp.2013.06.022.

9. Abreu Mda M, Pazetti R, Almeida FM, Correia AT, Parra ER, Silva LP, et al. Methylene blue attenuates ischemia-reperfusion injury in lung transplantation. *J Surg Res*. 2014 Dec;192(2):635-41. doi: 10.1016/j.jss.2014.07.043.

10. Salaris SC, Babbs CF, Voorhees WD. Methylene blue as an inhibitor of superoxide generation by xanthine oxidase. A potential new drug for the attenuation of ischemia/reperfusion injury. *Biochem Pharmacol*. 1991 Jul 15;42(3):499-506.

11. Koelzow H, Gedney JA, Baumann J, Snook NJ, Bellamy MC. The effect of methylene blue on the hemodynamic changes during ischemia reperfusion injury in orthotopic liver transplantation. *Anesth Analg*. 2002 Apr;94(4):824-9, table of contents.

12. Bardakci H, Kaplan S, Karadeniz U, Ozer C, Bardakci Y, Ozogul C, et al. Methylene blue decreases ischemia-reperfusion (I/R)-induced spinal cord injury: an in vivo study in an I/R rabbit model. *Eur Surg Res*. 2006;38(5):482-8. Epub 2006 Sep 29.

13. Dinc S, Caydere M, Akgul G, Yenidogan E, Hucumenoglu S, Rajesh M. Methylene blue inhibits the inflammatory process of the acetic acid-induced colitis in rat colonic mucosa. *Int Surg*. 2015 Jun 10. [Epub ahead of print]

14. Preiser J-C, Lejeune P, Roman A, Carlier E, De Backer D, Leeman M, et al. Methylene blue administration in septic shock: a clinical trial. *Crit Care Med*. 1995 Feb;23(2):259-64.

15. Xiong Z-M, O'Donovan M, Sun L, Choi JY, Ren M, Cao K. Anti-Aging Potentials of Meth-

- ylene Blue for Human Skin Longevity. *Sci Report*. 2017;7;1-12. doi: 10.1038/s41598-017-02419-3.
16. Zhang X, C. Rojas J, Gonzalez-Lima F. Methylene blue prevents neurodegeneration caused by rotenone in the retina. *Neurotox Res*. 2006;9;47-57. doi: 10.1007/BF03033307.
 17. Gonzalez-Lima F, Auchter A. Protection against neurodegeneration with low-dose methylene blue and near-infrared light. *Front Cell Neurosci*. 2015;9;179. doi: 10.3389/fn-cel.2015.00179.
 18. Lee BI, Suh YS, Chung YJ, Yu K, Park CB. Shedding Light on Alzheimer's β -Amyloidosis: Photosensitized Methylene Blue Inhibits Self-Assembly of β -Amyloid Peptides and Disintegrates Their Aggregates. *Sci Report*. 2017;7;1-10. doi: 10.1038/s41598-017-07581-2.
 19. Hochgräfe K, Sydow A, Matenia D, Cadinu D, Könen S, Petrova O, Pickhardt M, Goll P, Morellini F, Mandelkow E, Mandelkow E-M. Preventive methylene blue treatment preserves cognition in mice expressing full-length pro-aggregant human Tau. *Acta Neuropathol Commun*. 2015;3;25. doi: 10.1186/s40478-015-0204-4.
 20. Oz M, Lorke DE, Petroianu GA. Methylene blue and Alzheimer's disease. *Biochem Pharmacol*. 2009 Oct 15;78(8):927-32. doi: 10.1016/j.bcp.2009.04.034.
 21. Oz M, Lorke DE, Hasan M, Petroianu GA. Cellular and molecular actions of methylene blue in the nervous system. *Med Res Rev*. 2011 Jan;31(1):93-117. doi: 10.1002/med.20177.
 22. Zakaria A, Hamdi N, Abdel-Kader RM. Methylene Blue Improves Brain Mitochondrial ABAD Functions and Decreases A β in a Neuro-inflammatory Alzheimer's Disease Mouse Model. *Mol Neurobiol*. 2016;53;1220-1228. doi: 10.1007/s12035-014-9088-8.
 23. Wischik C, Edwards P, Lai R, Roth M, Harrington CR. Selective inhibition of Alzheimer disease-like tau aggregation by phenothiazines. *Proc Natl Acad Sci U S A*. 1996 Oct 1;93(20):11213-8.
 24. ClinicalTrials.gov. Effects of Methylene Blue in Healthy Aging, Mild Cognitive Impairment and Alzheimer's Disease - Tabular View - ClinicalTrials.gov. 2015. doi: <https://clinicaltrials.gov/ct2/show/record/NCT02380573>.
 25. Shen J, Xin W, Li Q, Gao Y, Yuan L, Zhang J. Methylene blue reduces neuronal apoptosis and improves blood-brain barrier integrity after traumatic brain injury. *Front Neurol*. 2019;10;1133. doi: 10.3389/fneur.2019.01133.
 26. Baecher-Allan C, Kaskow BJ, Weiner HL. Multiple sclerosis: mechanisms and immunotherapy. *Neuron*. 2018 Feb 21;97(4):742-768. doi: 10.1016/j.neuron.2018.01.021.
 27. Patergnani S, Fossati V, Bonora M, Giorgi C, Marchi S, Missiroli S, et al. Mitochondria in multiple sclerosis: molecular mechanisms of pathogenesis. *Int Rev Cell Mol Biol*. 2017;328:49-103. doi: 10.1016/bs.ircmb.2016.08.003.
 28. Correale J, Gaitán MI, Ysrraelit MC, Fiol MP. Progressive multiple sclerosis: from pathogenic mechanisms to treatment. *Brain*. 2017 Mar 1;140(3):527-546. doi: 10.1093/brain/aww258.
 29. Lassmann H. Pathogenic mechanisms associated with different clinical courses of multiple sclerosis. *Front Immunol*. 2019 Jan 10;9:3116. doi: 10.3389/fimmu.2018.03116. eCollection 2018.
 30. Lassmann H, van Horssen J. Oxidative stress and its impact on neurons and glia in multiple sclerosis lesions. *Biochim Biophys Acta*. 2016 Mar;1862(3):506-10. doi: 10.1016/j.bbadis.2015.09.018.
 31. Ohl K, Tenbrock K, Kipp M. Oxidative stress in multiple sclerosis: central and peripheral mode of action. *Exp Neurol*. 2016 Mar;277:58-67. doi: 10.1016/j.expneurol.2015.11.010.
 32. Choi I-Y, Lee P, Adany P, Hughes AJ, Belliston S, Denney DR, Lynch SG. In vivo evidence of oxidative stress in brains of patients with progressive multiple sclerosis. *Mult Scler*. 2018 Jul;24(8):1029-1038. doi: 10.1177/1352458517711568. Epub 2017 Jun 1.
 33. Islam MT. Oxidative stress and mitochondrial dysfunction-linked neurodegenerative disorders. *Neurol Res*. 2017 Jan;39(1):73-82. Epub 2016 Nov 3.
 34. Adamczyk B, Adamczyk-Sowa M. New insights into the role of oxidative stress mechanisms in the pathophysiology and treatment of multiple sclerosis. *Oxid Med Cell Longev*. 2016;2016:1973834. Epub 2016 Oct 18.
 35. Ortiz GG, Pacheco-Moisés FP, Torres-Sánchez ED, Sorto-Gómez TE, Mireles-Ramírez M, León-Gil A, et al. Multiple sclerosis and its relationship with oxidative stress, glutathione redox system, ATPase system, and membrane fluidity. *Trending Topics in Multiple Sclerosis*. 2016;5;150-166. doi: 10.5772/64737.

36. Ott M, Gogvadze V, Orrenius S, Zhivotovsky B. Mitochondria, oxidative stress and cell death. *Apoptosis*. 2007;12;913-922. doi: 10.1007/s10495-007-0756-2.
37. Venditti P, Di Stefano L, Di Meo S. Mitochondrial metabolism of reactive oxygen species. *Mitochondrion*. 2013 Mar;13(2):71-82. doi: 10.1016/j.mito.2013.01.008.
38. Atamna H, Nguyen A, Schultz C, Boyle K, Newberry J, Kato H, et al. Methylene blue delays cellular senescence and enhances key mitochondrial biochemical pathways. *FASEB J*. 2008 Mar;22(3):703-12. Epub 2007 Oct 10.
39. Zahednasab H, Firouzi M, Kaboudanian-Ardestani S, Mojallal-Tabatabaei Z, Karampour S, Keyvani H. The protective effect of rifampicin on behavioral deficits, biochemical, and neuropathological changes in a cuprizone model of demyelination. *Cytokine*. 2019 Jan;113:417-426. doi: 10.1016/j.cyto.2018.10.016.
40. Khodaei F, Rashedinia M, Heidari R, Rezaei M, Khoshnoud MJ. Ellagic acid improves muscle dysfunction in cuprizone-induced demyelinated mice via mitochondrial Sirt3 regulation. *Life Sci*. 2019 Nov 15;237:116954. doi: 10.1016/j.lfs.2019.116954.
41. Ommati MM, Farshad O, Mousavi K, Khalili M, Jamshidzadeh A, Heidari R. Chlorogenic acid supplementation improves skeletal muscle mitochondrial function in a rat model of resistance training. *Biologia*. 2020. doi: 10.2478/s11756-020-00429-7.
42. Heidari R, Jamshidzadeh A, Ghanbarinejad V, Ommati MM, Niknahad H. Taurine supplementation abates cirrhosis-associated locomotor dysfunction. *Clin Exp Hepatol*. 2018;4;72-82. doi: 10.5114/ceh.2018.75956.
43. Ommati MM, Farshad O, Jamshidzadeh A, Heidari R. Taurine enhances skeletal muscle mitochondrial function in a rat model of resistance training. *PharmaNutrition*. 2019;9;100161. doi: 10.1016/j.phanu.2019.100161.
44. Ommati MM, Jamshidzadeh A, Niknahad H, Mohammadi H, Sabouri S, Heidari R, et al. N-acetylcysteine treatment blunts liver failure-associated impairment of locomotor activity. *PharmaNutrition*. 2017;5;141-147. doi: 10.1016/j.phanu.2017.10.003.
45. Apelqvist G, Wikell C, Hindfelt B, Bergqvist PB, Andersson G, Bengtsson F. Altered open-field behavior in experimental chronic hepatic encephalopathy after single venlafaxine and citalopram challenges. *Psychopharmacology*. 1999;143:408-16. doi: 10.1007/s002130050966.
46. Kugelberg FC, Apelqvist G, Wikell C, Bengtsson F. Open-Field Behavioural Alterations in Liver-Impaired and Sham-Operated Rats after Acute Exposure to the Antidepressant Venlafaxine. *Basic Clin Pharmacol Toxicol*. 2005 Sep;97(3):155-61.
47. Amin B, Hosseinzadeh H. Evaluation of aqueous and ethanolic extracts of saffron, *Crocus sativus* L., and its constituents, safranal and crocin in allodynia and hyperalgesia induced by chronic constriction injury model of neuropathic pain in rats. *Fitoterapia*. 2012 Jul;83(5):888-95. doi: 10.1016/j.fitote.2012.03.022.
48. Hosseinzadeh H, Imenshahidi M, Hosseini M, Razavi BM. Effect of Linalool on Morphine Tolerance and Dependence in Mice. *Phytother Res*. 2012 Sep;26(9):1399-404. doi: 10.1002/ptr.3736.
49. Nystad AE, Lereim RR, Wergeland S, Oveland E, Myhr K-M, Bø L, Torkildsen Ø. Fingolimod downregulates brain sphingosine-1-phosphate receptor 1 levels but does not promote remyelination or neuroprotection in the cuprizone model. *J Neuroimmunol*. 2020 Feb 15;339:577091. doi: 10.1016/j.jneuroim.2019.577091.
50. Wang J, Sui R-X, Miao Q, Wang Q, Song L-J, Yu J-Z, et al. Effect of Fasudil on remyelination following cuprizone-induced demyelination. *CNS Neurosci Ther*. 2020 Jan;26(1):76-89. doi: 10.1111/cns.13154.
51. Caro AA, Adlong LW, Crocker SJ, Gardner MW, Luikart EF, Gron LU. Effect of garlic-derived organosulfur compounds on mitochondrial function and integrity in isolated mouse liver mitochondria. *Toxicol Lett*. 2012 Oct 17;214(2):166-74. doi: 10.1016/j.toxlet.2012.08.017.
52. Zhao P, Kalhorn TF, Slattery JT. Selective mitochondrial glutathione depletion by ethanol enhances acetaminophen toxicity in rat liver. *Hepatology*. 2002 Aug;36(2):326-35.
53. Heidari R, Ghanbarinejad V, Ommati MM, Jamshidzadeh A, Niknahad H. Regulation of mitochondrial function and energy metabolism: A primary mechanism of cytoprotection provided by carnosine. *Trends in Pharmaceutical Sciences*. 2018;4:41-50. doi: 10.1111/tips.v4i1.173.

54. Heidari R, Niknahad H, Sadeghi A, Mohammadi H, Ghanbarinejad V, Ommati MM, et al. Betaine treatment protects liver through regulating mitochondrial function and counteracting oxidative stress in acute and chronic animal models of hepatic injury. *Biomed Pharmacother*. 2018 Jul;103:75-86. doi: 10.1016/j.biopha.2018.04.010.
55. Tomasskovic B, Szarka A, editors. Comparison of mnnitol and xylitol as osmolytes in preparation of mitochondria. 5th European Conference of the International Federation for Medical and Biological Engineering; 2011: Springer.
56. Ommati MM, Farshad O, Mousavi K, Jamshidzadeh A, Azmoon M, Heidari S, Azarpira N, Niknahad H, Heidari R. Betaine supplementation mitigates intestinal damage and decreases serum bacterial endotoxin in cirrhotic rats. *PharmaNutrition*. 2020;12;100179. doi: 10.1016/j.phanu.2020.100179.
57. Chen Y, Xing D, Wang W, Ding Y, Du L. Development of an ion-pair HPLC method for investigation of energy charge changes in cerebral ischemia of mice and hypoxia of Neuro-2a cell line. *Biomed Chromatogr*. 2007 Jun;21(6):628-34.
58. Heidari R, Jafari F, Khodaei F, Shirazi Yeganeh B, Niknahad H. Mechanism of valproic acid-induced Fanconi syndrome involves mitochondrial dysfunction and oxidative stress in rat kidney. *Nephrology (Carlton)*. 2018 Apr;23(4):351-361. doi: 10.1111/nep.13012.
59. Jamshidzadeh A, Niknahad H, Heidari R, Zarei M, Ommati MM, Khodaei F. Carnosine protects brain mitochondria under hyperammonemic conditions: Relevance to hepatic encephalopathy treatment. *PharmaNutrition*. 2017;5;58-63. doi: 10.1016/j.phanu.2017.02.004.
60. Heidari R, Niknahad H. The role and study of mitochondrial impairment and oxidative stress in cholestasis. *Methods Mol Biol*. 2019;1981:117-132. doi: 10.1007/978-1-4939-9420-5_8.
61. Ommati MM, Farshad O, Niknahad H, Arabnezhad MR, Azarpira N, Mohammadi HR, H, et al. Cholestasis-associated reproductive toxicity in male and female rats: The fundamental role of mitochondrial impairment and oxidative stress. *Toxicol Lett*. 2019 Nov;316:60-72. doi: 10.1016/j.toxlet.2019.09.009.
62. Heidari R, Ahmadi A, Mohammadi H, Ommati MM, Azarpira N, Niknahad H. Mitochondrial dysfunction and oxidative stress are involved in the mechanism of methotrexate-induced renal injury and electrolytes imbalance. *Biomed Pharmacother*. 2018 Nov;107:834-840. doi: 10.1016/j.biopha.2018.08.050.
63. Heidari R, Ghanbarinejad V, Mohammadi H, Ahmadi A, Ommati MM, Abdoli N, et al. Mitochondria protection as a mechanism underlying the hepatoprotective effects of glycine in cholestatic mice. *Biomed Pharmacother*. 2018 Jan;97:1086-1095. doi: 10.1016/j.biopha.2017.10.166.
64. Ahmadian E, Babaei H, Mohajjel Nayebi A, Eftekhari A, Eghbal MA. Mechanistic approach for toxic effects of bupropion in primary rat hepatocytes. *Drug Res (Stuttg)*. 2017 Apr;67(4):217-222. doi: 10.1055/s-0042-123034.
65. Ahmadi N, Ghanbarinejad V, Ommati MM, Jamshidzadeh A, Heidari R. Taurine prevents mitochondrial membrane permeabilization and swelling upon interaction with manganese: Implication in the treatment of cirrhosis-associated central nervous system complications. *J Biochem Mol Toxicol*. 2018 Nov;32(11):e22216. doi: 10.1002/jbt.22216.
66. Ghanbarinejad V, Ahmadi A, Niknahad H, Ommati MM, Heidari R. Carnosine mitigates manganese mitotoxicity in an in vitro model of isolated brain mitochondria. *Adv Pharm Bull*. 2019 Jun;9(2):294-301. doi: 10.15171/apb.2019.034.
67. Ommati MM, Heidari R, Manthari RK, Tikka Chiranjeevi S, Niu R, Sun Z, et al. Paternal exposure to arsenic resulted in oxidative stress, autophagy, and mitochondrial impairments in the HPG axis of pubertal male offspring. *Chemosphere*. 2019 Dec;236:124325. doi: 10.1016/j.chemosphere.2019.07.056.
68. Ommati MM, Jamshidzadeh A, Heidari R, Sun Z, Zamiri MJ, Khodaei F, et al. Carnosine and histidine supplementation blunt lead-induced reproductive toxicity through antioxidative and mitochondria-dependent mechanisms. *Biol Trace Elem Res*. 2019 Jan;187(1):151-162. doi: 10.1007/s12011-018-1358-2.
69. Heidari R, Babaei H, Eghbal MA. Cytoprotective effects of organosulfur compounds against methimazole induced toxicity in isolated rat hepatocytes. *Adv Pharm Bull*. 2013;3(1):135-42. doi: 10.5681/apb.2013.023.
70. Ommati MM, Manthari RK, Tikka C, Niu R, Sun Z, Sabouri S, et al. Arsenic-induced autophagic alterations and mitochondrial impairments in

HPG-S axis of mature male mice offspring (F1-generation): A persistent toxicity study. *Toxicol Lett.* 2020 Jun 15;326:83-98. doi: 10.1016/j.toxlet.2020.02.013.

71. Heidari R, Mandegani L, Ghanbarinejad V, Siavashpour A, Ommati MM, Azarpira N, et al. Mitochondrial dysfunction as a mechanism involved in the pathogenesis of cirrhosis-associated cholemic nephropathy. *Biomed Pharmacother.* 2019 Jan;109:271-280. doi: 10.1016/j.biopha.2018.10.104.

72. Jamshidzadeh A, Heidari R, Abasvali M, Zarei M, Ommati MM, Abdoli N, et al. Taurine treatment preserves brain and liver mitochondrial function in a rat model of fulminant hepatic failure and hyperammonemia. *Biomedicine & Pharmacotherapy.* 2017;86:514-520. doi: 10.1016/j.biopha.2016.11.095.

73. Ommati MM, Heidari R, Jamshidzadeh A, Zamiri MJ, Sun Z, Sabouri S, et al. Dual effects of sulfasalazine on rat sperm characteristics, spermatogenesis, and steroidogenesis in two experimental models. *Toxicol Lett.* 2018 Mar 1;284:46-55. doi: 10.1016/j.toxlet.2017.11.034.

74. Seifi K, Rezaei M, Yansari AT, Zamiri MJ, Riazi GH, Heidari R. Short chain fatty acids may improve hepatic mitochondrial energy efficiency in heat stressed-broilers. *J Thermal Biol.* 2020;89:102520. doi: 10.1016/j.jtherbio.2020.102520.

75. Heidari R, Ghanbarinejad V, Ommati MM, Jamshidzadeh A, Niknahad H. Mitochondria protecting amino acids: Application against a wide range of mitochondria-linked complications. *PharmaNutrition.* 2018;6:180-190. doi: 10.1016/j.phanu.2018.09.001.

76. Jamshidzadeh A, Niknahad H, Heidari R, Azadbakht M, Khodaei F, Arabnezhad MR, Farshad O. Propylthiouracil-induced mitochondrial dysfunction in liver and its relevance to drug-induced hepatotoxicity. *Pharma Sci.* 2017;23:95-102. doi: 10.15171/PS.2017.15.

77. Niknahad H, Jamshidzadeh A, Heidari R, Abdoli N, Ommati MM, Jafari F, et al. The postulated hepatotoxic metabolite of methimazole causes mitochondrial dysfunction and energy metabolism disturbances in liver. *Pharm Sci.* 2016;22:217-226. doi: 10.15171/PS.2016.35.

78. Niknahad H, Jamshidzadeh A, Heidari R, Zarei M, Ommati MM. Ammonia-induced mito-

chondrial dysfunction and energy metabolism disturbances in isolated brain and liver mitochondria, and the effect of taurine administration: relevance to hepatic encephalopathy treatment. *Clin Exp Hepatol.* 2017 Sep;3(3):141-151. doi: 10.5114/ceh.2017.68833.

79. Mosmann T. Rapid colorimetric assay for cellular growth and survival: application to proliferation and cytotoxicity assays. *J Immunol Methods.* 1983 Dec 16;65(1-2):55-63.

80. Heidari R, Abdoli N, Ommati MM, Jamshidzadeh A, Niknahad H. Mitochondrial impairment induced by chenodeoxycholic acid: The protective effect of taurine and carnosine supplementation. *Trend Pharm Sci.* 2018;4. doi: 10.1111/tips.v4i2.182.

81. Heidari R, Arabnezhad MR, Ommati MM, Azarpira N, Ghodsimanesh E, Niknahad H. Boldine supplementation regulates mitochondrial function and oxidative stress in a rat model of hepatotoxicity. *Pharm Sci.* 2019;25:1-10. doi: 10.15171/PS.2019.1.

82. Niknahad H, Heidari R, Alzuhairi AM, Najibi A. Mitochondrial dysfunction as a mechanism for pioglitazone-induced injury toward HepG2 cell line. *Pharm Sci.* 2014;20:169-74.

83. Niknahad H, Heidari R, Mohammadzadeh R, Ommati MM, Khodaei F, Azarpira N, et al. Sulfasalazine induces mitochondrial dysfunction and renal injury. *Ren Fail.* 2017;39:745-753. doi: 10.1080/0886022X.2017.1399908.

84. Najibi A, Heidari R, Zarifi J, Jamshidzadeh A, Firoozabadi N, Niknahad H. Evaluating the Role of Drug Metabolism and Reactive Intermediates in Trazodone-Induced Cytotoxicity toward Freshly-Isolated Rat Hepatocytes. *Drug Res (Stuttg).* 2016 Nov;66(11):592-596.

85. Bradford MM. A rapid and sensitive method for the quantitation of microgram quantities of protein utilizing the principle of protein-dye binding. *Anal Biochem.* 1976 May 7;72:248-54.

86. Zhao X-Y, Lu M-H, Yuan D-J, Xu D-E, Yao P-P, Ji W-L, et al. Mitochondrial dysfunction in neural injury. *Front Neurosci.* 2019 Feb 4;13:30. doi: 10.3389/fnins.2019.00030. eCollection 2019.

87. Golpich M, Amini E, Mohamed Z, Azman Ali R, Mohamed Ibrahim N, Ahmadiani A. Mitochondrial dysfunction and biogenesis in neurodegenerative diseases: pathogenesis and treatment. *CNS Neurosci Ther.* 2017 Jan;23(1):5-22. doi:

10.1111/cns.12655.

88. Kozin MS, Kulakova OG, Favorova OO. Involvement of Mitochondria in Neurodegeneration in Multiple Sclerosis. *Biochemistry (Mosc)*. 2018 Jul;83(7):813-830. doi: 10.1134/S0006297918070052.

89. Nissanka N, Moraes CT. Mitochondrial DNA damage and reactive oxygen species in neurodegenerative disease. *FEBS Lett*. 2018 Mar;592(5):728-742. doi: 10.1002/1873-3468.12956.

90. Lan M, Tang X, Zhang J, Yao Z. Insights in pathogenesis of multiple sclerosis: nitric oxide may induce mitochondrial dysfunction of oligodendrocytes. *Rev Neurosci*. 2018 Jan 26;29(1):39-53. doi: 10.1515/revneuro-2017-0033.

91. Faissner S, Plemel JR, Gold R, Yong VW. Progressive multiple sclerosis: from pathophysiology to therapeutic strategies. *Nat Rev Drug Discov*. 2019 Dec;18(12):905-922. doi: 10.1038/s41573-019-0035-2.

92. Barcelos IPd, Troxell RM, Graves JS. Mitochondrial dysfunction and multiple sclerosis. *Biology (Basel)*. 2019 May 11;8(2). pii: E37. doi: 10.3390/biology8020037.

93. Campbell G, Mahad DJ. Mitochondrial dysfunction and axon degeneration in progressive multiple sclerosis. *FEBS Lett*. 2018 Apr;592(7):1113-1121. doi: 10.1002/1873-3468.13013.

94. van Horssen J, Witte ME, Schreibelt G, de Vries HE. Radical changes in multiple sclerosis pathogenesis. *Biochim Biophys Acta*. 2011 Feb;1812(2):141-50. doi: 10.1016/j.bbadis.2010.06.011.

95. Witte ME, Mahad DJ, Lassmann H, van Horssen J. Mitochondrial dysfunction contributes to neurodegeneration in multiple sclerosis. *Trends Mol Med*. 2014 Mar;20(3):179-87. doi: 10.1016/j.molmed.2013.11.007.

96. Dutta R, McDonough J, Yin X, Peterson J, Chang A, Torres T, et al. Mitochondrial dysfunction as a cause of axonal degeneration in multiple sclerosis patients. *Ann Neurol*. 2006 Mar;59(3):478-89.

97. Campbell GR, Ziabreva I, Reeve AK, Krishnan KJ, Reynolds R, Howell O, et al. Mitochondrial DNA deletions and neurodegeneration in multiple sclerosis. *Ann Neurol*. 2011 Mar;69(3):481-92. doi: 10.1002/ana.22109.

98. Mahad D, Lassmann H, Turnbull D. Mitochondria and disease progression in multiple sclerosis. *Neuropathol Appl Neurobiol*. 2008 Dec;34(6):577-89. doi: 10.1111/j.1365-2990.2008.00987.x.

99. Mahad D, Ziabreva I, Lassmann H, Turnbull D. Mitochondrial defects in acute multiple sclerosis lesions. *Brain*. 2008 Jul;131(Pt 7):1722-35. doi: 10.1093/brain/awn105.

100. Zambonin JL, Zhao C, Ohno N, Campbell GR, Engham S, Ziabreva I, et al. Increased mitochondrial content in remyelinated axons: Implications for multiple sclerosis. *Brain*. 2011 Jul;134(Pt 7):1901-13. doi: 10.1093/brain/awr110.

101. Atamna H, Kumar R. Protective role of methylene blue in Alzheimer's disease via mitochondria and cytochrome c oxidase. *J Alzheimers Dis*. 2010;20 Suppl 2:S439-52. doi: 10.3233/JAD-2010-100414.

102. Visarius TM, Stucki JW, Lauterburg BH. Stimulation of respiration by methylene blue in rat liver mitochondria. *FEBS Lett*. 1997 Jul 21;412(1):157-60.

103. Xiong Z-M, Choi JY, Wang K, Zhang H, Tariq Z, Wu DI, et al. Methylene blue alleviates nuclear and mitochondrial abnormalities in progeria. *Aging Cell*. 2016 Apr;15(2):279-90. doi: 10.1111/accel.12434.

104. Callaway NL, Riha PD, Bruchey AK, Munshi Z, Gonzalez-Lima F. Methylene blue improves brain oxidative metabolism and memory retention in rats. *Pharmacol Biochem Behav*. 2004 Jan;77(1):175-81.

105. Daiber A. Redox signaling (cross-talk) from and to mitochondria involves mitochondrial pores and reactive oxygen species. *Biochim Biophys Acta*. 2010 Jun-Jul;1797(6-7):897-906. doi: 10.1016/j.bbabi.2010.01.032.

106. Brookes PS, Yoon Y, Robotham JL, Anders MW, Sheu S-S. Calcium, ATP, and ROS: a mitochondrial love-hate triangle. *Am J Physiol Cell Physiol*. 2004 Oct;287(4):C817-33.

107. Shadel GS, Horvath TL. Mitochondrial ROS signaling in organismal homeostasis. *Cell*. 2015 Oct 22;163(3):560-9. doi: 10.1016/j.cell.2015.10.001.

108. Dröse S, Brandt U. Molecular mechanisms of superoxide production by the mitochondrial respiratory chain. *Adv Exp Med Biol*. 2012;748:145-69. doi: 10.1007/978-1-4614-3573-0_6.

109. Atamna H, Atamna W, Al-Eyd G, Shanower G, Dhahbi JM. Combined activation of the energy and cellular-defense pathways may explain the potent anti-senescence activity of methylene blue. *Redox Biol.* 2015 Dec;6:426-435. doi: 10.1016/j.redox.2015.09.004.
110. Lassmann H. Axonal and neuronal pathology in multiple sclerosis: what have we learnt from animal models. *Exp Neurol.* 2010 Sep;225(1):2-8. doi: 10.1016/j.expneurol.2009.10.009.
111. Franklin RJM, French-Constant C, Edgar JM, Smith KJ. Neuroprotection and repair in multiple sclerosis. *Nat Rev Neurol.* 2012 Nov 5;8(11):624-34. doi: 10.1038/nrneurol.2012.200.
112. Stack C, Jainuddin S, Elipenahli C, Gerges M, Starkova N, Starkov AA, et al. Methylene blue upregulates Nrf2/ARE genes and prevents tau-related neurotoxicity. *Hum Mol Genet.* 2014 Jul 15;23(14):3716-32. doi: 10.1093/hmg/ddu080.
113. Rojas JC, John JM, Lee J, Gonzalez-Lima FJNr. Methylene blue provides behavioral and metabolic neuroprotection against optic neuropathy. *Neurotox Res.* 2009 Apr;15(3):260-73. doi: 10.1007/s12640-009-9027-z.
114. Rojas JC, Simola N, Kermath BA, Kane JR, Schallert T, Gonzalez-Lima F. Striatal neuroprotection with methylene blue. *Neuroscience.* 2009 Oct 20;163(3):877-89. doi: 10.1016/j.neuroscience.2009.07.012.
115. Rojas JC, Bruchey AK, Gonzalez-Lima F. Neurometabolic mechanisms for memory enhancement and neuroprotection of methylene blue. *Prog Neurobiol.* 2012 Jan;96(1):32-45. doi: 10.1016/j.pneurobio.2011.10.007.
116. Poteet E, Winters A, Yan L-J, Shufelt K, Green KN, Simpkins JW, et al. Neuroprotective actions of methylene blue and its derivatives. *PLoS One.* 2012;7(10):e48279. doi: 10.1371/journal.pone.0048279.
117. Zhou L, Flores J, Noël A, Beauchet O, Sjöström PJ, Leblanc AC. Methylene blue inhibits Caspase-6 activity, and reverses Caspase-6-induced cognitive impairment and neuroinflammation in aged mice. *Acta Neuropathol Commun.* 2019 Dec 16;7(1):210. doi: 10.1186/s40478-019-0856-6.
118. Berrocal M, Caballero-Bermejo M, Gutierrez-Merino C, Mata AM. Methylene Blue Blocks and Reverses the Inhibitory Effect of Tau on PMCA Function. *Int J Mol Sci.* 2019 Jul 18;20(14). pii: E3521. doi: 10.3390/ijms20143521.
119. de Castro AA, Soares FV, Pereira AF, Polisel DA, Caetano MS, Leal DHS, et al. Non-conventional compounds with potential therapeutic effects against Alzheimer's disease. *Expert Rev Neurother.* 2019 May;19(5):375-395. doi: 10.1080/14737175.2019.1608823.